



Environment and
Climate Change Canada
Canadian Wildlife Service

Environnement et
Changement climatique Canada
Service canadien de la faune

NATURE TRUST
BRITISH COLUMBIA 



Annual British Columbia Conservation Areas Summary Report 2024

British Columbia NGO Conservation Areas
Database Technical Working Group

December 18, 2025



About the BC NGO Conservation Areas Database:

Conservation partners have collaborated for a number of years as part of the British Columbia Non-governmental Organization (BC NGO) Conservation Areas Database Working Group to develop a comprehensive, standardized inventory of British Columbia's non-governmental conservation areas (also known as private conservation lands). These areas include lands designated as Fee Simple, Registerable Interests, and Unregisterable Interests and complement the inventories created by the Federal and Provincial Governments for federal and provincial protected areas. The BC NGO Conservation Areas Database was developed from cadastral mapping of legal parcels by local governments. The attributes of each conservation parcel were populated with information obtained from conservation partners as well as by searching land titles.

Fee Simple is defined as ownership of the title to a legal parcel. Registerable Interests are non-Fee Simple conservation securements registered on title, specifically conservation covenants and leases. Conservation covenants are a voluntary and legally binding interest on all or a portion of a legal parcel. The title is retained by the landowner, but the covenant and covenant holder (e.g. conservation organization) are registered on the title and bind the current and future owners of the parcel in how the land is used. Leased lands are managed for conservation similar to Fee Simple lands and are usually long term. There are some leases which are not registered on title and have not been included in the conservation areas data. Unregisterable Interests are conservation securements not registered on title. These are primarily conservation agreements but include other types of agreements as well. Conservation Agreements are voluntary arrangements with land owners to manage the land, or a portion of the land, with a particular objective. Unregistered Interests must be secured under a signed legal agreement of 10 year term or longer to be included within the database and associated reporting. Importantly, overlapping ownership and/or management arrangements can occur on a single legal parcel. For instance, the purchase of a Fee Simple parcel may have been cost-shared with two or more conservation organizations who are all registered on the title. This same parcel may also have a conservation covenant registered and held by another organization.

Technical development of the database is led by the Technical Working Group, namely Ducks Unlimited Canada, The Nature Trust of British Columbia and the Canadian Wildlife Service of Environment and Climate Change Canada. Project direction and coordination is led by the General Working Group members, which in addition to the Technical Working Group includes the Nature Conservancy of Canada and The Land Trust Alliance of British Columbia. The conservation areas of nearly fifty conservation organizations are included in the database. Some local land trusts have chosen to not include some of their conservation areas in the project (n=2). The total area of these lands currently amounts to 23 hectares and represents 20 conservation areas.

For the purposes of this database, southern Gulf Island local trust committees have been considered local government organizations rather than NGOs and as such do not appear in the NGO conservation areas summary table on page 16.

The Municipal Local Government Park Natural Areas included in this reporting represent areas with natural land cover within municipal parks. These areas were identified through a project led by The Nature Trust of British Columbia with funding from the Canadian Wildlife Service that was completed in March 2017, which also included regional district park natural areas. In 2023, Ducks Unlimited Canada undertook a project to create a new layer of significant (greater than one hectare) regional district park natural areas using publicly available data. The updated dataset, titled BC Significant Regional District Park Natural Areas, contains areas secured as of August 2023. A full list of contributing Local Governments can be found on page 17 of this report. Requests for access to these data may be made to The Nature Trust of British Columbia and Ducks Unlimited Canada. While amendments may be periodically made to these datasets, large scale updates are not made on an annual basis.

The Annual British Columbia Conservation Areas Summary provides an accurate identification of total conservation area in BC. As NGO conservation areas may overlap with some Provincial and Federal conservation areas as well as Local Government Park Natural Areas, the calculation for the total area of conservation lands in BC removes any existing overlap. Spatial data used to represent Provincial and Federal conservation areas has been sourced primarily from the DataBC data portal (<https://www.data.gov.bc.ca/>) and the Canadian Protected and Conserved Areas Database (CPCAD) (www.canada.ca/en/environment-climate-change/services/national-wildlife-areas/protected-conserved-areas-database.html). The focus of this Summary Reporting is primarily on terrestrial protected areas. Marine conservation areas have been included as of the 2021 Summary Report, and are summarized separately from other conservation designations on page 6 of this report. NGO conservation lands total 223,433.8 ha as of December 31, 2024. Overlap representing multiple securements on a single parcel has been removed from this figure to eliminate double counting. However, a full summary of specific securements by NGO can be found on page 16.

Fee Simple spatial data from the BC NGO Conservation Areas Database is available for public access via the provincial DataBC data portal (<https://catalogue.data.gov.bc.ca/dataset/ngo-conservation-areas-fee-simple>). These Fee Simple data have also been included within the federal CPCAD for use in national level summaries and reporting. By fall each year, DataBC and CPCAD are provided the most recent version of the BC NGO Conservation Areas Database for update of their respective datasets and to meet annual publishing deadlines.

Please note that the area values identified in this report may not be directly comparable to those included in previous reports due to changes in criteria for inclusion and ongoing spatial geometry improvements. Additionally, there may be differences between the values reported in provincial or federal protected lands summaries as compared to this report due to differences in the types of conservation designations included in those analyses. Please contact the database custodian for additional information.

Data Recognition:

British Columbia NGO Conservation Areas Technical Working Group. 2025. BC NGO Conservation Areas Database - Fee Simple, Registerable Interests, and Unregisterable Interests (secured as of December 31, 2024). Digital data files. Last updated October 24, 2025.

Update Note:

The following organization has been added into the database since the previous reporting:

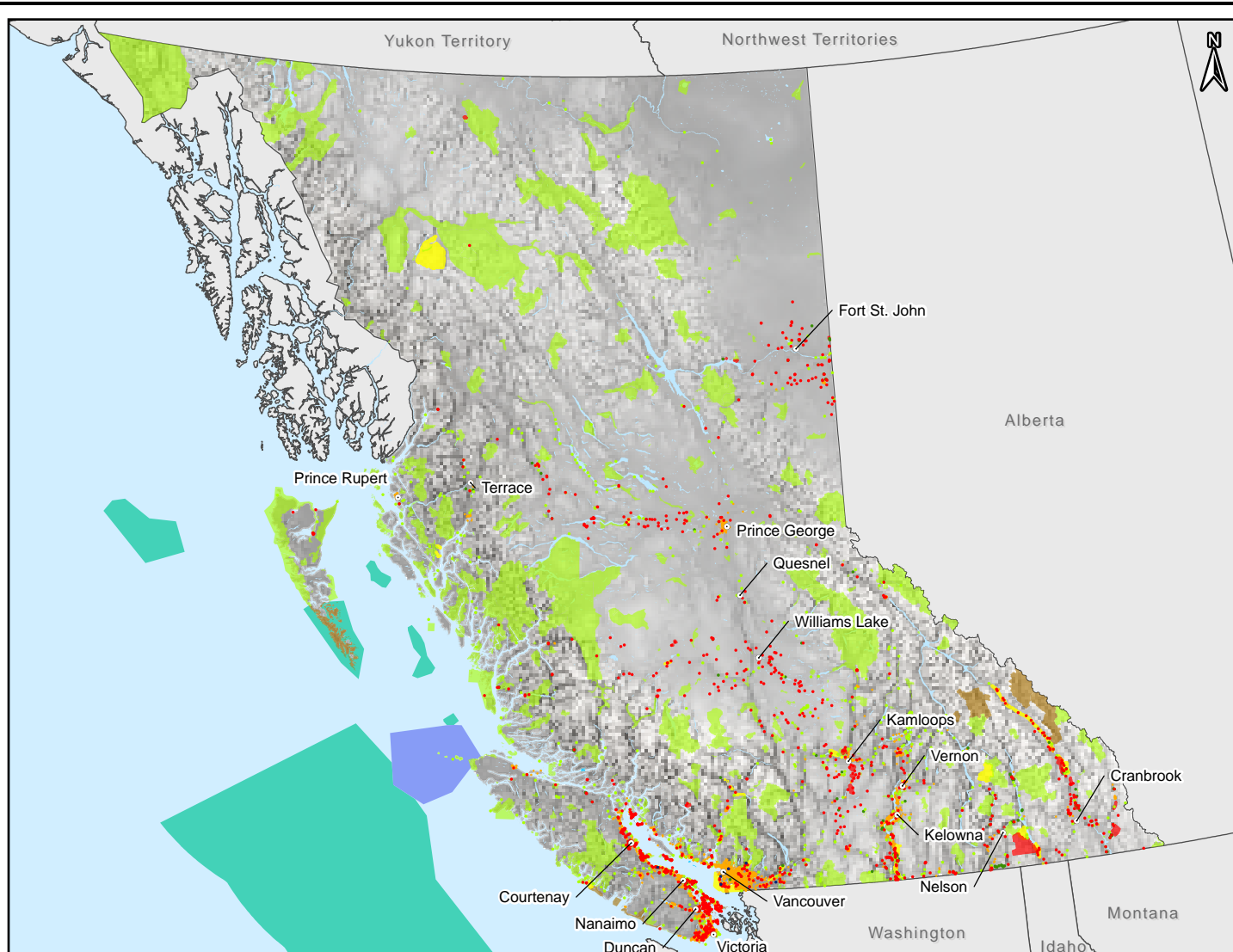
- W̱SÁNEĆ Lands Trust Society

2024 Securement Updates

The following changes to NGO securements in the BC NGO Conservation Areas Database occurred during 2024. Only those Securement Organizations that incurred changes to area values from either spatial geometry updates or acquisition of new conservation areas are listed below. Note that improvements and corrections to underlying source cadastral datasets (ParcelMap BC) may cause significant geometric changes where spatial data is updated to match newly available source cadastre.

Securement Organization	Change by Conservation Area Subtype*			Change in Total Secured Area (Ha)	Reason for Change
	Fee Simple (Ha)	Registered Interests (Ha) <i>Conservation Covenants and Leases</i>	Unregistered Interests (Ha) <i>Conservation Agreements</i>		
BC Parks Foundation	2,455.8			2,455.8	New fee simple acquisitions
Bowen Island Conservancy	65.0			65.0	New fee simple acquisition
Ducks Unlimited Canada	234.4		136.2	369.9	New fee simple and unregistered interest acquisitions; Removal of unregistered interests secured in fee simple
Gabriola Land and Trails Trust		2.7		2.7	New registered interest acquisition
Galiano Conservancy Association	42.0			42.0	New fee simple acquisition
Habitat Acquisition Trust	2.1			2.1	New fee simple acquisition
Islands Trust Conservancy		2.7		2.7	New registered interest acquisition
Nature Conservancy of Canada	478.2	-9.1	-214.3	253.6	New fee simple acquisition; Removal of transferred fee simple and registered interest securements; Removal of unregistered interests not meeting database criteria; Geometry updates
Nature Conservancy of the North Okanagan		25.4		25.4	New registered interest acquisition
Pender Islands Conservancy Association	19.1			19.1	New fee simple acquisitions
The Land Conservancy of BC	-0.3	2.3		2.0	Geometry updates
The Nature Trust of British Columbia	688.3			673.9	New fee simple acquisitions – includes a transition of land from registered interest to fee simple, where the registered interest was discharged after 2024
The Valhalla Foundation for Ecology	0.1			0.1	Geometry updates
WSÁNEĆ Lands Trust Society	18.5			18.5	Addition of land trust to database

*Spatial geometry changes of 0.05 ha or less have not been included in this table



British Columbia Conservation Areas

Non-governmental Organization Conservation Areas

- Fee Simple, Covenants and Other Registered Interests on Title, Agreements and Other Unregistered Interests Not on Title*

Provincial Protected Areas

- Provincial Parks, Ecological Reserves, Recreation Areas, Protected Areas, and Conservancies
- Wildlife Management Areas
- Ministry of Water, Land, and Resource Stewardship Acquisition, Lease, and Transfer of Administration Lands

National Protected Areas

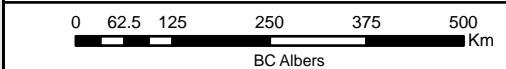
- National Parks
- National Wildlife Areas and other National Protected Areas
- Marine National Wildlife Areas
- National Marine Conservation Areas and Marine Protected Areas
- National Marine Fisheries Closure Areas

Local Government Protected Areas

- Local Government Park Natural Areas

Points represent conservation areas that are less than 500 hectares; polygons represent those that are greater than or equal to 500 hectares. Some points may be obscured by overlying points.

*Accuracy of some conservation areas has not yet been quality assured by respective securement organizations.



BC NGO Conservation Areas Database Technical Working Group:



Layer	Source
Non-governmental Organization Conservation Areas	British Columbia NGO Conservation Areas Database Technical Working Group. 2024. BC NGO Conservation Areas Database - Fee Simple, Registerable Interests, and Unregisterable Interests (secured as of Dec 31, 2024). [ESRI Personal Geodatabase]. Last updated Oct 24 2025.
Provincial Protected Areas - Provincial Parks, Ecological Reserves, Recreation Areas, and Protected Areas	BC Government GeoBC. TANTALIS - BC Parks, Ecological Reserves, and Protected Areas. [ESRI File Geodatabase], Aug 2025.
- Conservancies	BC Government GeoBC. TANTALIS - Conservancy Areas. [ESRI File Geodatabase], Aug 2025.
- Wildlife Management Areas - Acquisition, Lease, and Transfer of Administration Lands	BC Government GeoBC. Conservation Lands. [ESRI File Geodatabase], Aug 2025.
National Protected Areas - National Parks	BC Government GeoBC. National Parks of Canada within British Columbia. [ESRI File Geodatabase], Aug 2025.
- National Wildlife Areas and other National Protected Areas	Environment and Climate Change Canada. Canadian Protected and Conserved Areas Database 2024. [ESRI File Geodatabase]. Accessed Aug 2025.
- National Marine Conservation Areas, Marine Protected Areas, and Fisheries Closure Areas	
Local Government Park Natural Areas - Municipal	The Nature Trust of British Columbia. 2017. Local Government Park Natural - Municipalities. Digital data files. Last updated 12 July 2019.
- Regional District	Ducks Unlimited Canada. 2023. BC Significant Regional District Park Natural Areas. Digital GIS Data files. Last updated Oct 10 2023.
Lakes and Rivers	BC Annotation 1:2,000,000 (Digital Baseline Mapping). June 2006.
Multidirectional Hillshade Basemap	Elevation/World_Hillshade: Esri, USGS. [ESRI Map Service].
1:50,000 DEM Basemap	Natural Resources Canada. Canada digital elevation data (1:50,000). [ESRI File Geodatabase]. 1997-1999.
Canada & USA Basemaps	Natural Resources Canada. Atlas of Canada National Scale Data 1:1,000,000. [ESRI Geodatabase]. 2015.

Conservation Area Type	Conservation Area Subtype	Hectares
Non-governmental Organization Conservation Areas	Fee Simple	130,112.7
	Covenants and Other Registered Interests on Title	22,850.0
	Agreements and Other Unregistered Interests Not on Title ¹	90,235.3
Provincial Protected Areas	Provincial Parks, Ecological Reserves, Recreation Areas, Protected Areas, Conservancies ²	14,442,036.5
	Wildlife Management Areas	255,037.5
	Ministry of Water, Land, and Resource Stewardship Administered Lands ³	22,944.1
National Protected Areas	National Parks	613,459.3
	National Wildlife Areas and Other National Protected Areas (Canadian Wildlife Service)	2,549.9
Local Government Park Natural Areas	Regional District Park Natural Areas	43,280.4
	Municipal Park Natural Areas	33,592.7
Total Area⁴		15,584,395.9
Marine Conservation Areas	Marine National Wildlife Areas	1,149,005.7
	National Marine Conservation Areas and Marine Protected Areas	14,494,869.0
	National Marine Fisheries Closure Areas	5,393.0
	Total Area⁵	

As NGO conservation areas may contain overlapping ownership and/or management arrangements (eg subtypes), the calculation of "Total Area" of conservation lands in BC removes this overlap to provide a true conservation area value. Total NGO conservation area in BC is 223,433.8 ha.

Footnotes

- The area value contains some uncertainty. It contains values sourced directly from Ducks Unlimited Canada and may change as geometries for these securements are refined within the database. Only those Unregistered Interests of 10 year term or longer have been included in this database and associated reporting.
- The area value is derived from GIS data and may vary from published BC Parks numbers as these are based on legal size.
- Consists of Acquisition, Lease, and Transfer of Administration lands only. MWLRS WMA Leases are included with Wildlife Management Areas.
- Total Area may change as uncertainty is reduced for Agreements and Other Unregistered Interests Not on Title.
- This number represents Total Area for marine conservation designations which do not have any terrestrial component.

British Columbia Conservation Areas: Vancouver Island

Non-governmental Organization Conservation Areas

- Fee Simple
- Covenants and Other Registered Interests on Title
- Agreements and Other Unregistered Interests
- Not on Title*

Provincial Protected Areas

- Provincial Parks, Ecological Reserves, Recreation Areas, Protected Areas, and Conservancies
- Wildlife Management Areas
- Ministry of Water, Land, and Resource Stewardship Acquisition, Lease, and Transfer of Administration Lands

National Protected Areas

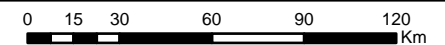
- National Parks
- National Wildlife Areas and other National Protected Areas
- Marine National Wildlife Areas
- National Marine Conservation Areas and Marine Protected Areas
- National Marine Fisheries Closure Areas

Local Government Protected Areas

- Local Government Park Natural Areas
- Highways

Points represent conservation areas that are less than 500 hectares; polygons represent those that are greater than or equal to 500 hectares. Some points may be obscured by overlying points.

*Accuracy of some conservation areas has not yet been quality assured by respective securement organizations.

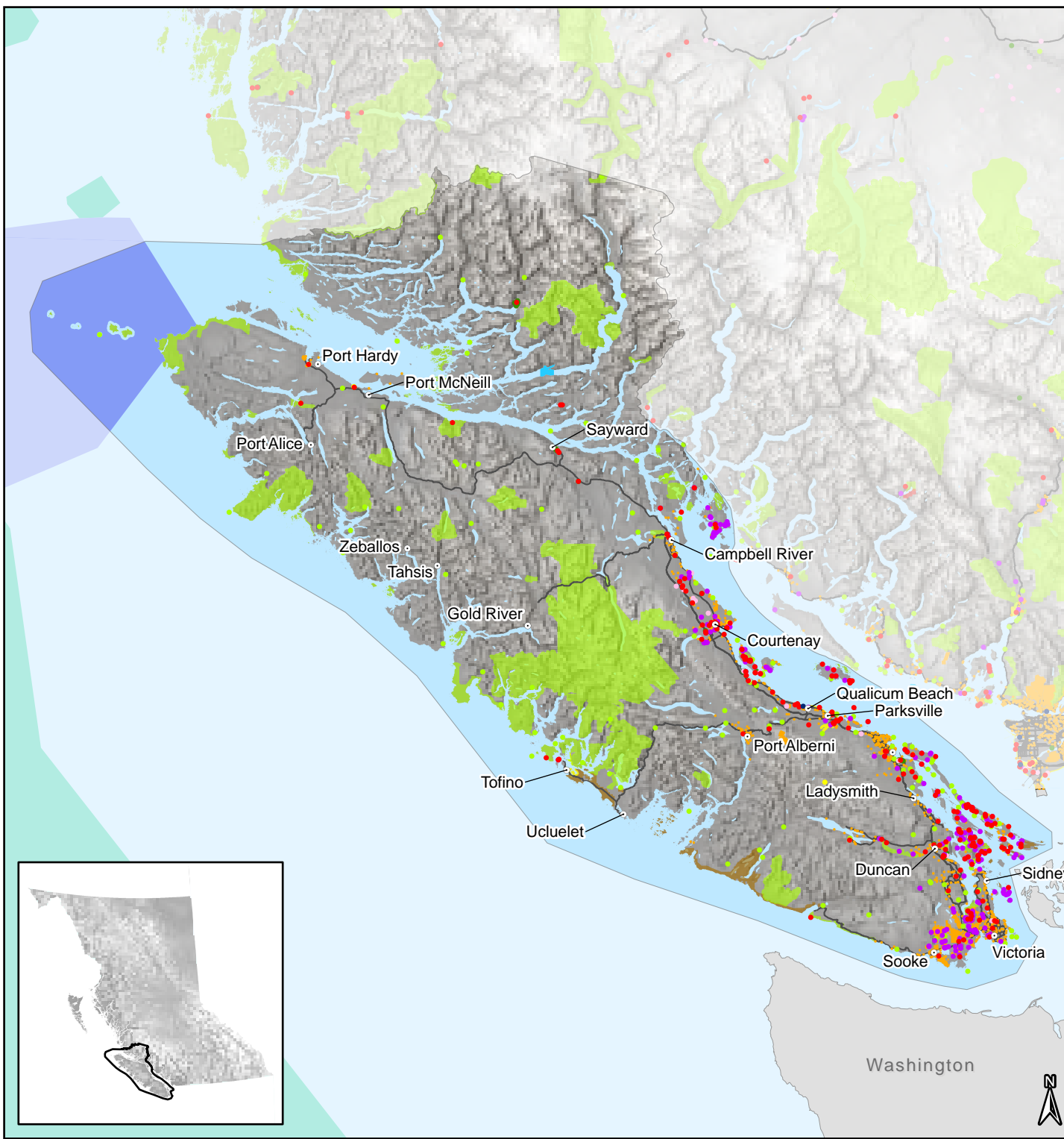
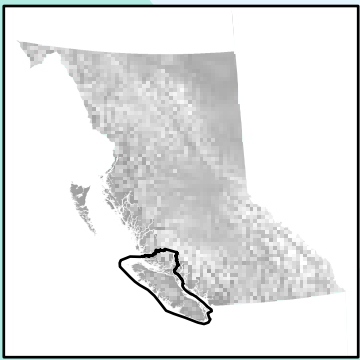


BC Albers

BC NGO Conservation Areas Database Technical Working Group:



Layer	Source
Non-governmental Organization Conservation Areas	British Columbia NGO Conservation Areas Database Technical Working Group. 2024. BC NGO Conservation Areas Database - Fee Simple, Registerable Interests, and Unregisterable Interests (secured as of Dec 31, 2023). [ESRI Personal Geodatabase]. Last updated Oct 24 2025.
Provincial Protected Areas - Provincial Parks, Ecological Reserves, Recreation Areas, and Protected Areas	BC Government GeoBC. TANTALIS - BC Parks, Ecological Reserves, and Protected Areas. [ESRI File Geodatabase]. Aug 2025.
- Conservancies	BC Government GeoBC. TANTALIS - Conservancy Areas. [ESRI File Geodatabase]. Aug 2025.
- Wildlife Management Areas - Acquisition, Lease, and Transfer of Administration Lands	BC Government GeoBC. Conservation Lands. [ESRI File Geodatabase]. Aug 2025.
National Protected Areas - National Parks	BC Government GeoBC. National Parks of Canada within British Columbia. [ESRI File Geodatabase]. Aug 2025.
- National Wildlife Areas and other National Protected Areas	Environment and Climate Change Canada. Canadian Protected and Conserved Areas Database 2024. [ESRI File Geodatabase]. Accessed Aug 2025.
- National Marine Conservation Areas, Marine Protected Areas, and Fisheries Closure Areas	
Local Government Park Natural Areas - Municipal	The Nature Trust of British Columbia. 2017. Local Government Park Natural - Municipalities. Digital data files. Last updated 12 July 2019.
- Regional District	Ducks Unlimited Canada. 2023. BC Significant Regional District Park Natural Areas. Digital GIS Data files. Last updated Oct 10 2023.
Lakes and Rivers	BC Annotation 1:2,000,000 (Digital Baseline Mapping). June 2006.
Multidirectional Hillshade Basemap	Elevation/World_Hillshade: Esri, CGIAR, USGS
1:50,000 DEM Basemap	Natural Resources Canada. Canada digital elevation data (1:50,000). [ESRI File Geodatabase]. 1997-1999.
Canada & USA Basemaps	Natural Resources Canada. Atlas of Canada National Scale Data 1:1,000,000. [ESRI Geodatabase]. 2015.



Washington



British Columbia Conservation Areas: South Coast

Non-governmental Organization Conservation Areas

- Fee Simple
- Covenants and Other Registered Interests on Title
- Agreements and Other Unregistered Interests
- Not on Title*

Provincial Protected Areas

- Provincial Parks, Ecological Reserves, Recreation Areas, Protected Areas, and Conservancies
- Wildlife Management Areas
- Ministry of Water, Land, and Resource Stewardship Acquisition, Lease, and Transfer of Administration Lands

National Protected Areas

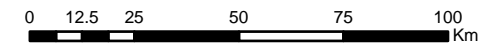
- National Parks
- National Wildlife Areas and other National Protected Areas
- Marine National Wildlife Areas
- National Marine Conservation Areas and Marine Protected Areas
- National Marine Fisheries Closure Areas

Local Government Protected Areas

- Local Government Park Natural Areas
- Highways

Points represent conservation areas that are less than 500 hectares; polygons represent those that are greater than or equal to 500 hectares. Some points may be obscured by overlying points.

*Accuracy of some conservation areas has not yet been quality assured by respective securement organizations.

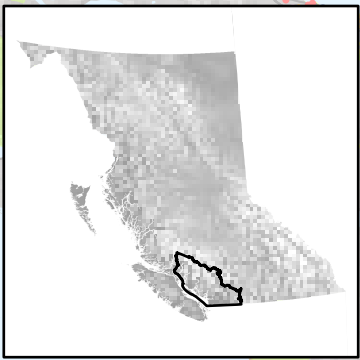


BC Albers

BC NGO Conservation Areas Database Technical Working Group:

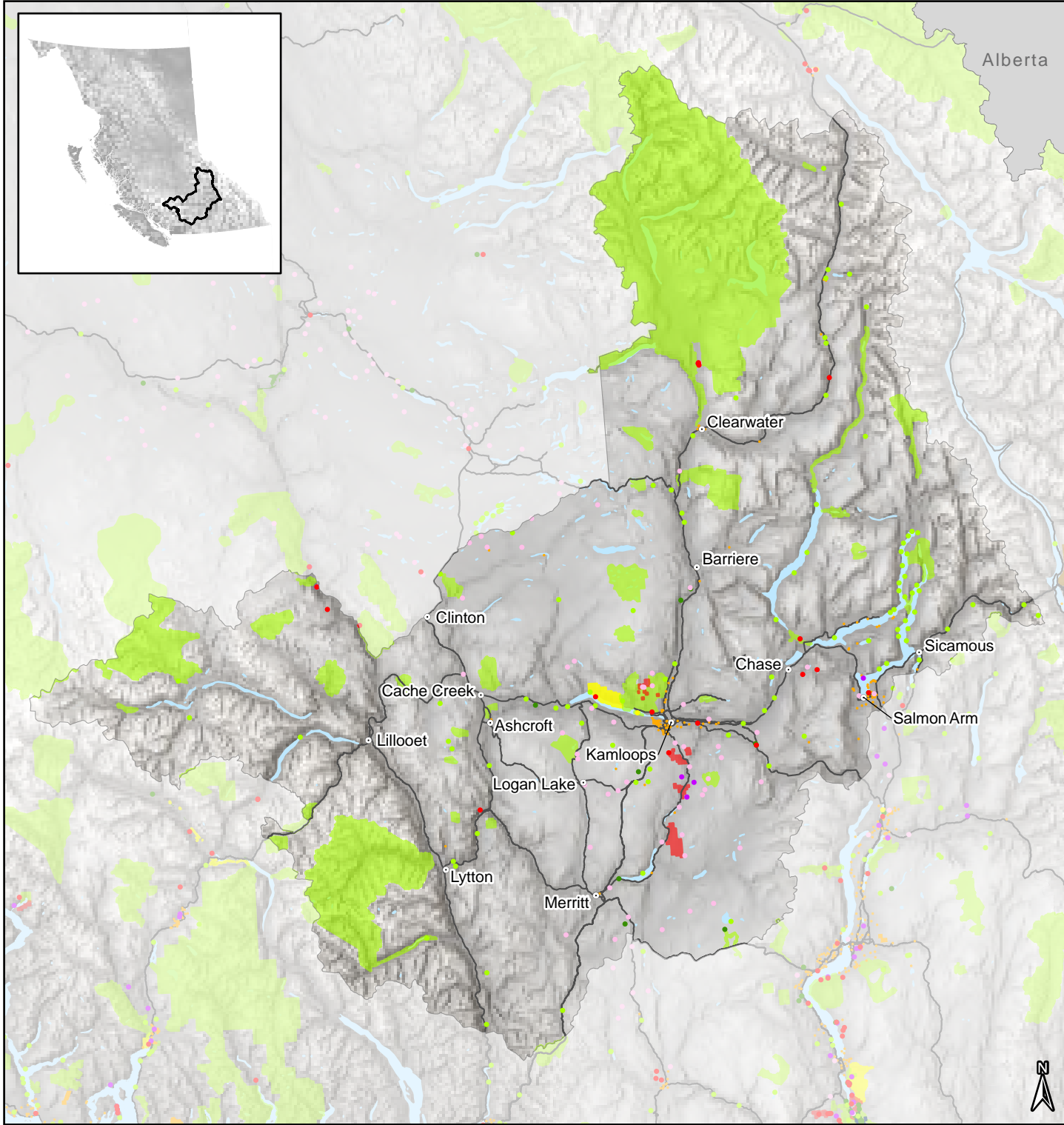
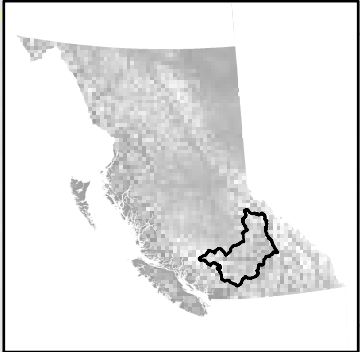


Layer	Source
Non-governmental Organization Conservation Areas	British Columbia NGO Conservation Areas Database Technical Working Group. 2024. BC NGO Conservation Areas Database - Fee Simple, Registerable Interests, and Unregisterable Interests (secured as of Dec 31, 2023). [ESRI Personal Geodatabase]. Last updated Oct 24 2025.
Provincial Protected Areas - Provincial Parks, Ecological Reserves, Recreation Areas, and Protected Areas	BC Government GeoBC. TANTALIS - BC Parks, Ecological Reserves, and Protected Areas. [ESRI File Geodatabase]. Aug 2025.
- Conservancies	BC Government GeoBC. TANTALIS - Conservancy Areas. [ESRI File Geodatabase]. Aug 2025.
- Wildlife Management Areas	BC Government GeoBC. Conservation Lands. [ESRI File Geodatabase]. Aug 2025.
- Acquisition, Lease, and Transfer of Administration Lands	BC Government GeoBC. Conservation Lands. [ESRI File Geodatabase]. Aug 2025.
National Protected Areas - National Parks	BC Government GeoBC. National Parks of Canada within British Columbia. [ESRI File Geodatabase]. Aug 2025.
- National Wildlife Areas and other National Protected Areas	Environment and Climate Change Canada. Canadian Protected and Conserved Areas Database 2024. [ESRI File Geodatabase]. Accessed Aug 2025.
- National Marine Conservation Areas, Marine Protected Areas, and Fisheries Closure Areas	Environment and Climate Change Canada. Canadian Protected and Conserved Areas Database 2024. [ESRI File Geodatabase]. Accessed Aug 2025.
Local Government Park Natural Areas - Municipal	The Nature Trust of British Columbia. 2017. Local Government Park Natural - Municipalities. Digital data files. Last updated 12 July 2019.
- Regional District	Ducks Unlimited Canada. 2023. BC Significant Regional District Park Natural Areas. Digital GIS Data files. Last updated Oct 10 2023.
Lakes and Rivers	BC Annotation 1:2,000,000 (Digital Baseline Mapping). June 2006.
Multidirectional Hillshade Basemap	Elevation/World_Hillshade: Esri, USGS. [ESRI Map Service].
1:50,000 DEM Basemap	Natural Resources Canada. Canada digital elevation data (1,500,000). [ESRI File Geodatabase]. 1997-1999.
Canada & USA Basemaps	Natural Resources Canada. Atlas of Canada National Scale Data 1:1,000,000. [ESRI Geodatabase]. 2015.



Washington





British Columbia Conservation Areas: Thompson

Non-governmental Organization Conservation Areas

- Fee Simple
- Covenants and Other Registered Interests on Title
- Agreements and Other Unregistered Interests Not on Title*

Provincial Protected Areas

- Provincial Parks, Ecological Reserves, Recreation Areas, Protected Areas, and Conservancies
- Wildlife Management Areas
- Ministry of Water, Land, and Resource Stewardship Acquisition, Lease, and Transfer of Administration Lands

National Protected Areas

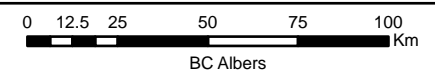
- National Parks
- National Wildlife Areas and other National Protected Areas

Local Government Protected Areas

- Local Government Park Natural Areas
- Highways

Points represent conservation areas that are less than 500 hectares; polygons represent those that are greater than or equal to 500 hectares. Some points may be obscured by overlying points.

*Accuracy of some conservation areas has not yet been quality assured by respective securement organizations.



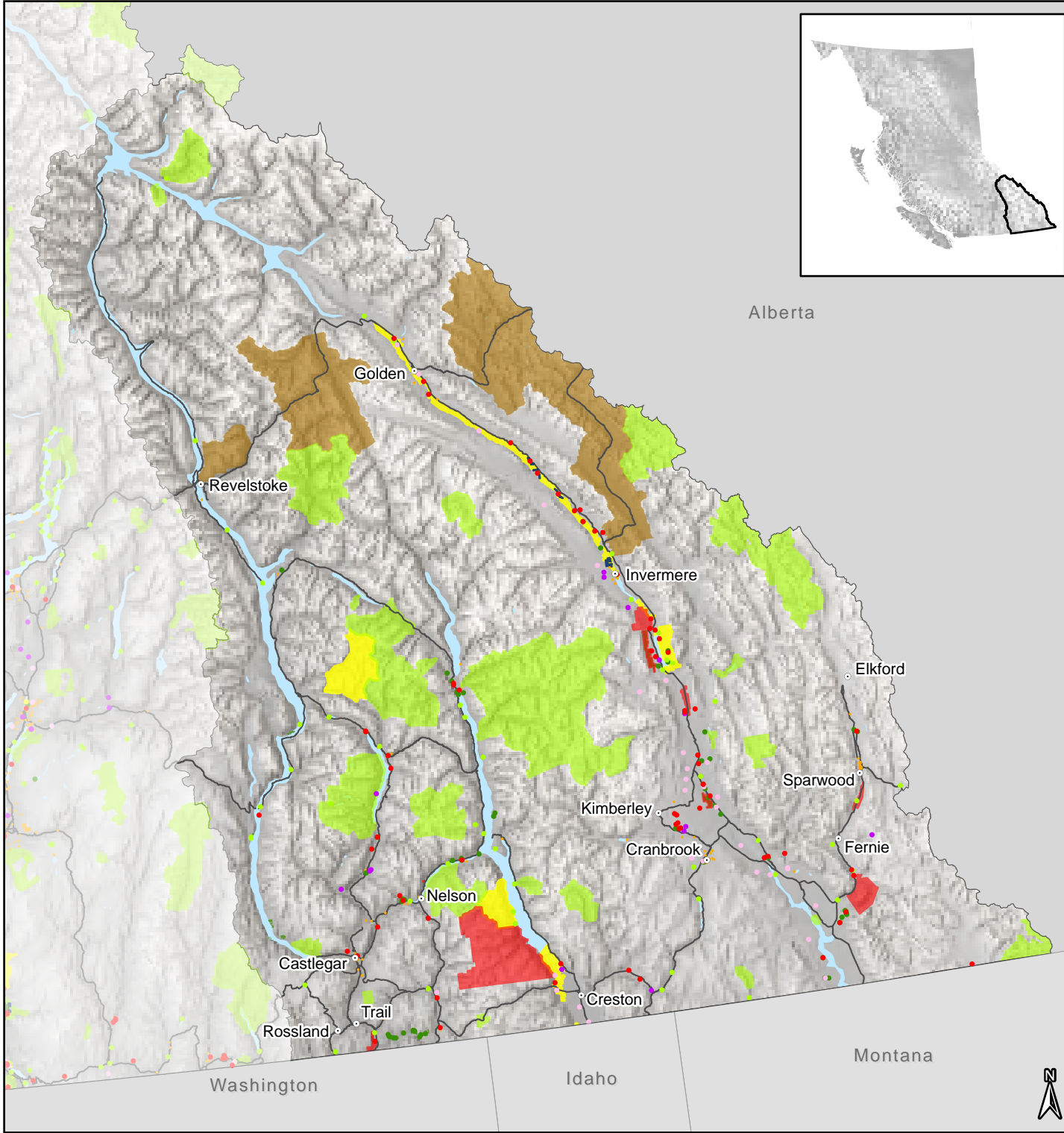
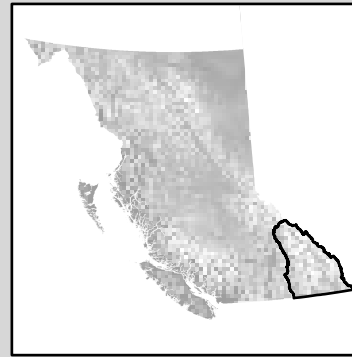
BC NGO Conservation Areas Database Technical Working Group:



Layer	Source
Non-governmental Organization Conservation Areas	British Columbia NGO Conservation Areas Database Technical Working Group. 2024. BC NGO Conservation Areas Database - Fee Simple, Registerable Interests, and Unregisterable Interests (secured as of Dec 31, 2023). [ESRI Personal Geodatabase]. Last updated Oct 24 2025.
Provincial Protected Areas - Provincial Parks, Ecological Reserves, Recreation Areas, and Protected Areas - Conservancies	BC Government GeoBC. TANTALIS - BC Parks, Ecological Reserves, and Protected Areas. [ESRI File Geodatabase], Aug 2025. BC Government GeoBC. TANTALIS - Conservancy Areas. [ESRI File Geodatabase], Aug 2025.
- Wildlife Management Areas - Acquisition, Lease, and Transfer of Administration Lands	BC Government GeoBC. Conservation Lands. [ESRI File Geodatabase], Aug 2025.
National Protected Areas - National Parks - National Wildlife Areas and other National Protected Areas - National Marine Conservation Areas, Marine Protected Areas, and Fisheries Closure Areas	BC Government GeoBC. National Parks of Canada within British Columbia. [ESRI File Geodatabase], Aug 2025. Environment and Climate Change Canada. Canadian Protected and Conserved Areas Database 2024. [ESRI File Geodatabase]. Accessed Aug 2025.
Local Government Park Natural Areas - Municipal - Regional District	The Nature Trust of British Columbia. 2017. Local Government Park Natural - Municipalities. Digital data files. Last updated 12 July 2019. Ducks Unlimited Canada. 2023. BC Significant Regional District Park Natural Areas. Digital GIS Data files. Last updated Oct 10 2023.
Lakes and Rivers	BC Annotation 1:2,000,000 (Digital Baseline Mapping). June 2006.
Multidirectional Hillshade Basemap	Elevation/World_Hillshade: Esri, USGS. [ESRI Map Service].
1:50,000 DEM Basemap	Natural Resources Canada. Canada digital elevation data (1:50,000). [ESRI File Geodatabase]. 1997-1999.
Canada & USA Basemaps	Natural Resources Canada. Atlas of Canada National Scale Data 1:1,000,000. [ESRI Geodatabase]. 2015.



British Columbia Conservation Areas: Kootenay



Non-governmental Organization Conservation Areas

- Fee Simple
- Covenants and Other Registered Interests on Title
- Agreements and Other Unregistered Interests Not on Title*

Provincial Protected Areas

- Provincial Parks, Ecological Reserves, Recreation Areas, Protected Areas, and Conservancies
- Wildlife Management Areas
- Ministry of Water, Land, and Resource Stewardship Acquisition, Lease, and Transfer of Administration Lands

National Protected Areas

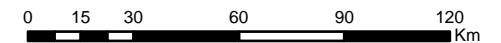
- National Parks
- National Wildlife Areas and other National Protected Areas

Local Government Protected Areas

- Local Government Park Natural Areas
- Highways

Points represent conservation areas that are less than 500 hectares; polygons represent those that are greater than or equal to 500 hectares. Some points may be obscured by overlying points.

*Accuracy of some conservation areas has not yet been quality assured by respective securement organizations.



BC Albers

BC NGO Conservation Areas Database Technical Working Group:



Layer	Source
Non-governmental Organization Conservation Areas	British Columbia NGO Conservation Areas Database Technical Working Group. 2024. BC NGO Conservation Areas Database - Fee Simple, Registerable Interests, and Unregisterable Interests (secured as of Dec 31, 2023). [ESRI Personal Geodatabase]. Last updated Oct 24 2025.
Provincial Protected Areas - Provincial Parks, Ecological Reserves, Recreation Areas, and Protected Areas - Conservancies	BC Government GeoBC. TANTALIS - BC Parks, Ecological Reserves, and Protected Areas. [ESRI File Geodatabase]. Aug 2025.
- Wildlife Management Areas - Acquisition, Lease, and Transfer of Administration Lands	BC Government GeoBC. Conservation Lands. [ESRI File Geodatabase]. Aug 2025.
National Protected Areas - National Parks - National Wildlife Areas and other National Protected Areas - National Marine Conservation Areas, Marine Protected Areas, and Fisheries Closure Areas	BC Government GeoBC. National Parks of Canada within British Columbia. [ESRI File Geodatabase]. Aug 2025. Environment and Climate Change Canada. Canadian Protected and Conserved Areas Database 2024. [ESRI File Geodatabase]. Accessed Aug 2025.
Local Government Park Natural Areas - Municipal - Regional District	The Nature Trust of British Columbia. 2017. Local Government Park Natural - Municipalities. Digital data files. Last updated 12 July 2019. Ducks Unlimited Canada. 2023. BC Significant Regional District Park Natural Areas. Digital GIS Data files. Last updated Oct 10 2023.
Lakes and Rivers	BC Annotation 1:2,000,000 (Digital Baseline Mapping). June 2006.
Multidirectional Hillshade Basemap	Elevation/World_Hillshade: Esri, USGS. [ESRI Map Service].
1:50,000 DEM Basemap	Natural Resources Canada. Canada digital elevation data (1:50,000). [ESRI File Geodatabase]. 1997-1999.
Canada & USA Basemaps	Natural Resources Canada. Atlas of Canada National Scale Data 1:1,000,000. [ESRI Geodatabase]. 2015.



British Columbia Conservation Areas: Cariboo

Non-governmental Organization Conservation Areas

- Fee Simple
- Covenants and Other Registered Interests on Title
- Agreements and Other Unregistered Interests
- Not on Title*

Provincial Protected Areas

- Provincial Parks, Ecological Reserves, Recreation Areas, Protected Areas, and Conservancies
- Wildlife Management Areas
- Ministry of Water, Land, and Resource Stewardship Acquisition, Lease, and Transfer of Administration Lands

National Protected Areas

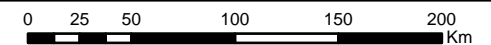
- National Parks
- National Wildlife Areas and other National Protected Areas
- Marine National Wildlife Areas
- National Marine Conservation Areas and Marine Protected Areas
- National Marine Fisheries Closure Areas

Local Government Protected Areas

- Local Government Park Natural Areas
- Highways

Points represent conservation areas that are less than 500 hectares; polygons represent those that are greater than or equal to 500 hectares. Some points may be obscured by overlying points.

*Accuracy of some conservation areas has not yet been quality assured by respective securement organizations.



BC Albers

BC NGO Conservation Areas Database Technical Working Group:



Layer	Source
Non-governmental Organization Conservation Areas	British Columbia NGO Conservation Areas Database Technical Working Group. 2024. BC NGO Conservation Areas Database - Fee Simple, Registerable Interests, and Unregisterable Interests (secured as of Dec 31, 2023). [ESRI Personal Geodatabase]. Last updated Oct 24 2025.
Provincial Protected Areas - Provincial Parks, Ecological Reserves, Recreation Areas, and Protected Areas - Conservancies	BC Government GeoBC. TANTALIS - BC Parks, Ecological Reserves, and Protected Areas. [ESRI File Geodatabase], Aug 2025.
- Wildlife Management Areas - Acquisition, Lease, and Transfer of Administration Lands	BC Government GeoBC. Conservation Lands. [ESRI File Geodatabase], Aug 2025.
National Protected Areas - National Parks - National Wildlife Areas and other National Protected Areas - National Marine Conservation Areas, Marine Protected Areas, and Fisheries Closure Areas	BC Government GeoBC. National Parks of Canada within British Columbia. [ESRI File Geodatabase], Aug 2025. Environment and Climate Change Canada. Canadian Protected and Conserved Areas Database 2024. [ESRI File Geodatabase]. Accessed Aug 2025.
Local Government Park Natural Areas - Municipal - Regional District	The Nature Trust of British Columbia. 2017. Local Government Park Natural - Municipalities. Digital data files. Last updated 12 July 2019. Ducks Unlimited Canada. 2023. BC Significant Regional District Park Natural Areas. Digital GIS Data files. Last updated Oct 10 2023.
Lakes and Rivers	BC Annotation 1:2,000,000 (Digital Baseline Mapping). June 2006.
Multidirectional Hillshade Basemap	Elevation/World_Hillshade: Esri, USGS. [ESRI Map Service].
1:50,000 DEM Basemap	Natural Resources Canada. Canada digital elevation data (1:50,000). [ESRI File Geodatabase], 1997-1999.
Canada & USA Basemaps	Natural Resources Canada. Atlas of Canada National Scale Data 1:1,000,000. [ESRI Geodatabase], 2015.

Washington



British Columbia Conservation Areas: Skeena

Non-governmental Organization Conservation Areas

- Fee Simple
- Covenants and Other Registered Interests on Title
- Agreements and Other Unregistered Interests Not on Title*

Provincial Protected Areas

- Provincial Parks, Ecological Reserves, Recreation Areas, Protected Areas, and Conservancies
- Wildlife Management Areas
- Ministry of Water, Land, and Resource Stewardship Acquisition, Lease, and Transfer of Administration Lands

National Protected Areas

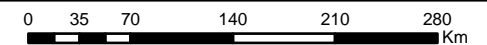
- National Parks
- National Wildlife Areas and other National Protected Areas
- Marine National Wildlife Areas
- National Marine Conservation Areas and Marine Protected Areas
- National Marine Fisheries Closure Areas

Local Government Protected Areas

- Local Government Park Natural Areas
- Highways

Points represent conservation areas that are less than 500 hectares; polygons represent those that are greater than or equal to 500 hectares. Some points may be obscured by overlying points.

*Accuracy of some conservation areas has not yet been quality assured by respective securement organizations.



BC Albers

BC NGO Conservation Areas Database Technical Working Group:



Layer	Source
Non-governmental Organization Conservation Areas	British Columbia NGO Conservation Areas Database Technical Working Group. 2024. BC NGO Conservation Areas Database - Fee Simple, Registerable Interests, and Unregisterable Interests (secured as of Dec 31, 2023). [ESRI Personal Geodatabase]. Last updated Oct 24 2025.
Provincial Protected Areas - Provincial Parks, Ecological Reserves, Recreation Areas, and Protected Areas - Conservancies	BC Government GeoBC. TANTALIS - BC Parks, Ecological Reserves, and Protected Areas. [ESRI File Geodatabase]. Aug 2025. BC Government GeoBC. TANTALIS - Conservancy Areas. [ESRI File Geodatabase]. Aug 2025.
- Wildlife Management Areas - Acquisition, Lease, and Transfer of Administration Lands	BC Government GeoBC. Conservation Lands. [ESRI File Geodatabase]. Aug 2025.
National Protected Areas - National Parks - National Wildlife Areas and other National Protected Areas - National Marine Conservation Areas, Marine Protected Areas, and Fisheries Closure Areas	BC Government GeoBC. National Parks of Canada within British Columbia. [ESRI File Geodatabase]. Aug 2025. Environment and Climate Change Canada. Canadian Protected and Conserved Areas Database 2024. [ESRI File Geodatabase]. Accessed Aug 2025.
Local Government Park Natural Areas - Municipal - Regional District	The Nature Trust of British Columbia. 2017. Local Government Park Natural - Municipalities. Digital data files. Last updated 12 July 2019. Ducks Unlimited Canada. 2023. BC Significant Regional District Park Natural Areas. Digital GIS Data files. Last updated Oct 10 2023.
Lakes and Rivers	BC Annotation 1:2,000,000 (Digital Baseline Mapping). June 2006.
Multidirectional Hillshade Basemap	Elevation/World_Hillshade: Esri, USGS. [ESRI Map Service].
1:50,000 DEM Basemap	Natural Resources Canada. Canada digital elevation data (1:50,000). [ESRI File Geodatabase]. 1997-1999.
Canada & USA Basemaps	Natural Resources Canada. Atlas of Canada National Scale Data 1:1,000,000. [ESRI Geodatabase]. 2015.

Yukon

Dease Lake

Alaska

Stewart

Hazelton

New Hazelton

Granisle

Smithers

Telkwa

Houston

Burns Lake

Prince Rupert

Masset

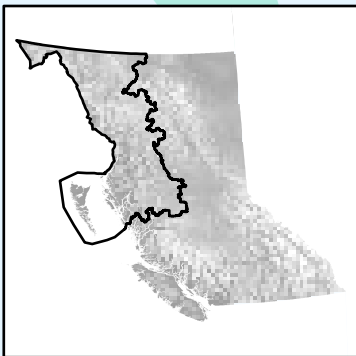
Port Edward

Terrace

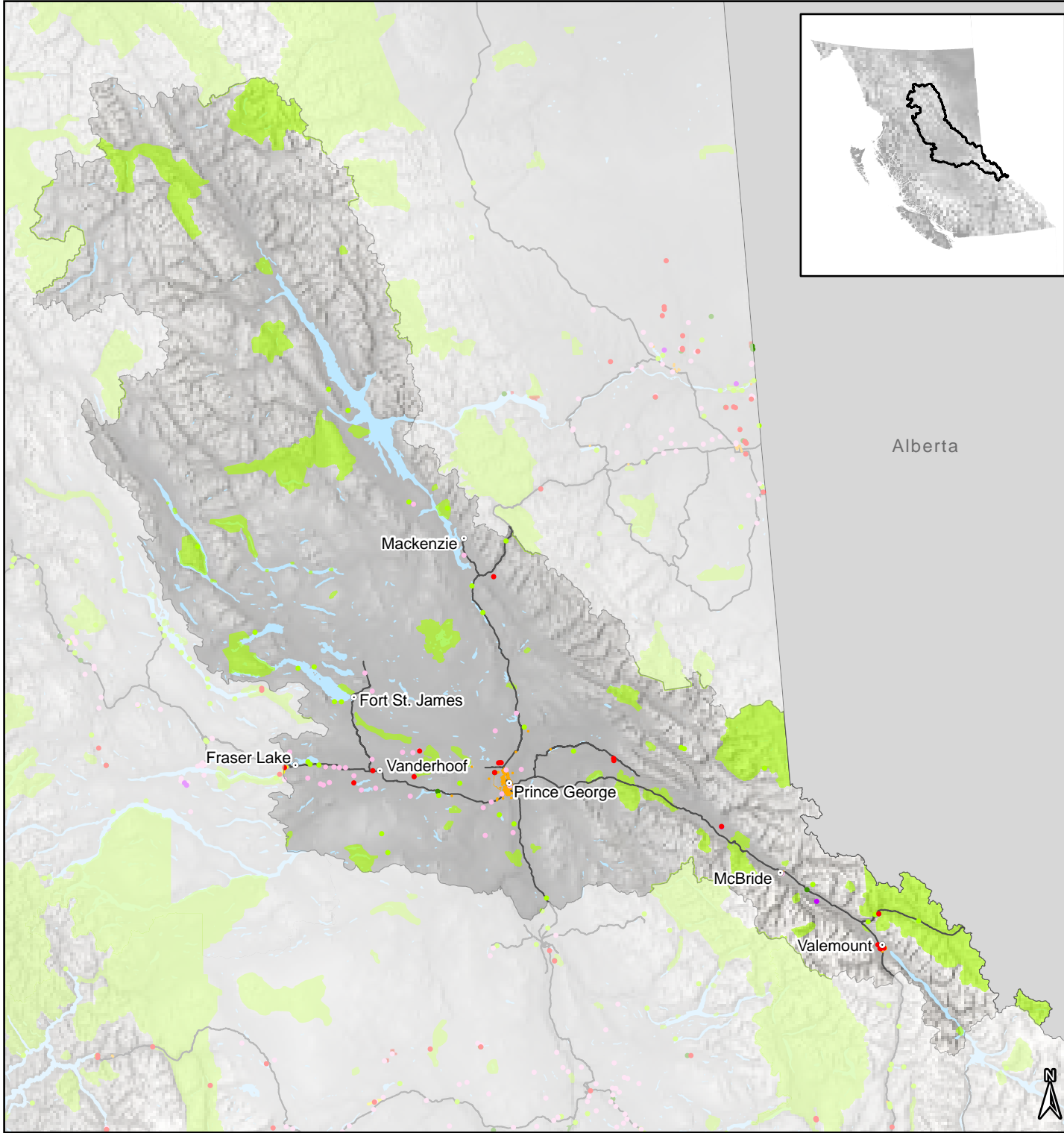
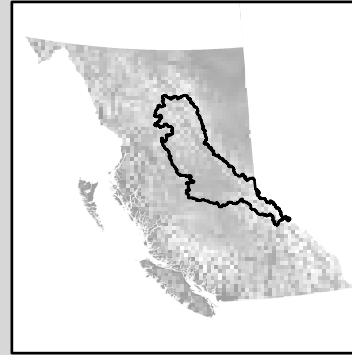
Kitimat

Port Clements

Village of Queen Charlotte



British Columbia Conservation Areas: Omineca



Alberta

Non-governmental Organization Conservation Areas

- Fee Simple
- Covenants and Other Registered Interests on Title
- Agreements and Other Unregistered Interests Not on Title*

Provincial Protected Areas

- Provincial Parks, Ecological Reserves, Recreation Areas, Protected Areas, and Conservancies
- Wildlife Management Areas
- Ministry of Water, Land, and Resource Stewardship Acquisition, Lease, and Transfer of Administration Lands

National Protected Areas

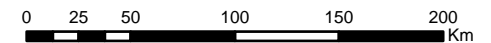
- National Parks
- National Wildlife Areas and other National Protected Areas

Local Government Protected Areas

- Local Government Park Natural Areas
- Highways

Points represent conservation areas that are less than 500 hectares; polygons represent those that are greater than or equal to 500 hectares. Some points may be obscured by overlying points.

*Accuracy of some conservation areas has not yet been quality assured by respective securement organizations.

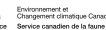


BC Albers

BC NGO Conservation Areas Database Technical Working Group:



Environment and
Climate Change Canada
Canadian Wildlife Service



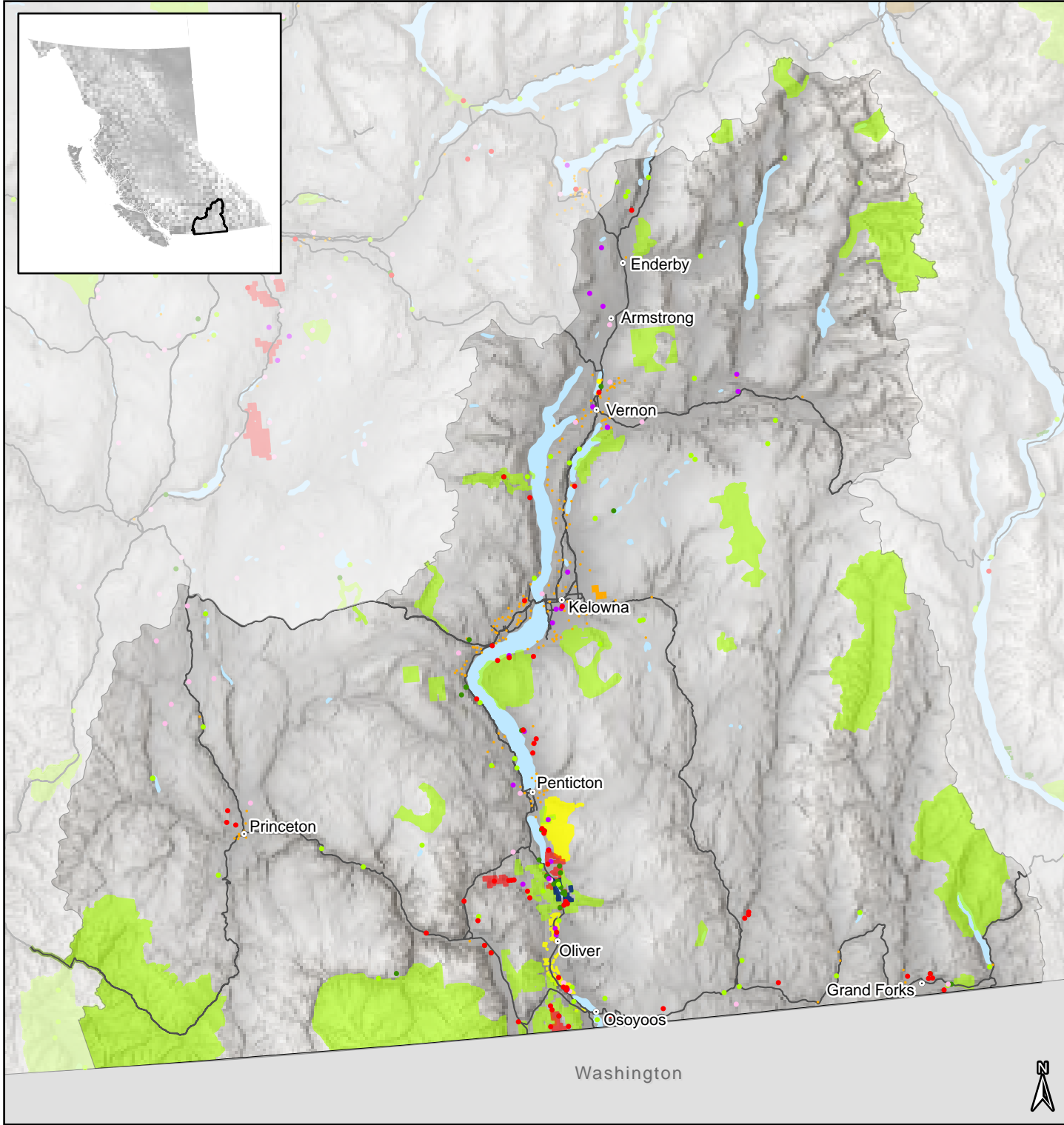
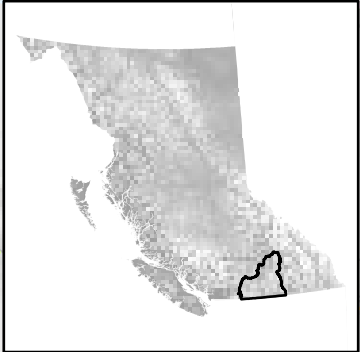
NATURE TRUST
BRITISH COLUMBIA



Layer	Source
Non-governmental Organization Conservation Areas	British Columbia NGO Conservation Areas Database Technical Working Group. 2024. BC NGO Conservation Areas Database - Fee Simple, Registerable Interests, and Unregisterable Interests (secured as of Dec 31, 2023). [ESRI Personal Geodatabase]. Last updated Oct 24 2025.
Provincial Protected Areas - Provincial Parks, Ecological Reserves, Recreation Areas, and Protected Areas - Conservancies	BC Government GeoBC. TANTALIS - BC Parks, Ecological Reserves, and Protected Areas. [ESRI File Geodatabase], Aug 2025. BC Government GeoBC. TANTALIS - Conservancy Areas. [ESRI File Geodatabase], Aug 2025.
- Wildlife Management Areas - Acquisition, Lease, and Transfer of Administration Lands	BC Government GeoBC. Conservation Lands. [ESRI File Geodatabase], Aug 2025.
National Protected Areas - National Parks - National Wildlife Areas and other National Protected Areas - National Marine Conservation Areas, Marine Protected Areas, and Fisheries Closure Areas	BC Government GeoBC. National Parks of Canada within British Columbia. [ESRI File Geodatabase], Aug 2025. Environment and Climate Change Canada. Canadian Protected and Conserved Areas Database 2024. [ESRI File Geodatabase]. Accessed Aug 2025.
Local Government Park Natural Areas - Municipal - Regional District	The Nature Trust of British Columbia. 2017. Local Government Park Natural - Municipalities. Digital data files. Last updated 12 July 2019. Ducks Unlimited Canada. 2023. BC Significant Regional District Park Natural Areas. Digital GIS Data files. Last updated Oct 10 2023.
Lakes and Rivers	BC Annotation 1:2,000,000 (Digital Baseline Mapping). June 2006.
Multidirectional Hillshade Basemap	Elevation/World_Hillshade: Esri, USGS. [ESRI Map Service].
1:50,000 DEM Basemap	Natural Resources Canada. Canada digital elevation data (1:50,000). [ESRI File Geodatabase]. 1997-1999.
Canada & USA Basemaps	Natural Resources Canada. Atlas of Canada National Scale Data 1:1,000,000. [ESRI Geodatabase], 2015.



British Columbia Conservation Areas: Okanagan



Non-governmental Organization Conservation Areas

- Fee Simple
- Covenants and Other Registered Interests on Title
- Agreements and Other Unregistered Interests Not on Title*

Provincial Protected Areas

- Provincial Parks, Ecological Reserves, Recreation Areas, Protected Areas, and Conservancies
- Wildlife Management Areas
- Ministry of Water, Land, and Resource Stewardship Acquisition, Lease, and Transfer of Administration Lands

National Protected Areas

- National Parks
- National Wildlife Areas and other National Protected Areas

Local Government Protected Areas

- Local Government Park Natural Areas
- Highways

Points represent conservation areas that are less than 500 hectares; polygons represent those that are greater than or equal to 500 hectares. Some points may be obscured by overlying points.

*Accuracy of some conservation areas has not yet been quality assured by respective securement organizations.



BC NGO Conservation Areas Database Technical Working Group:



Layer	Source
Non-governmental Organization Conservation Areas	British Columbia NGO Conservation Areas Database Technical Working Group. 2024. BC NGO Conservation Areas Database - Fee Simple, Registerable Interests, and Unregisterable Interests (secured as of Dec 31, 2023). [ESRI Personal Geodatabase]. Last updated Oct 24 2025.
Provincial Protected Areas - Provincial Parks, Ecological Reserves, Recreation Areas, and Protected Areas - Conservancies	BC Government GeoBC. TANTALIS - BC Parks, Ecological Reserves, and Protected Areas. [ESRI File Geodatabase]. Aug 2025. BC Government GeoBC. TANTALIS - Conservancy Areas. [ESRI File Geodatabase]. Aug 2025.
- Wildlife Management Areas - Acquisition, Lease, and Transfer of Administration Lands	BC Government GeoBC. Conservation Lands. [ESRI File Geodatabase]. Aug 2025.
National Protected Areas - National Parks - National Wildlife Areas and other National Protected Areas - National Marine Conservation Areas, Marine Protected Areas, and Fisheries Closure Areas	BC Government GeoBC. National Parks of Canada within British Columbia. [ESRI File Geodatabase]. Aug 2025. Environment and Climate Change Canada. Canadian Protected and Conserved Areas Database 2024. [ESRI File Geodatabase]. Accessed Aug 2025.
Local Government Park Natural Areas - Municipal - Regional District	The Nature Trust of British Columbia. 2017. Local Government Park Natural - Municipalities. Digital data files. Last updated 12 July 2019. Ducks Unlimited Canada. 2023. BC Significant Regional District Park Natural Areas. Digital GIS Data files. Last updated Oct 10 2023.
Lakes and Rivers	BC Annotation 1:2,000,000 (Digital Baseline Mapping). June 2006.
Multidirectional Hillshade Basemap	Elevation/World_Hillshade: Esri, CGIAR, USGS
1:50,000 DEM Basemap	Natural Resources Canada. Canada digital elevation data (1:50,000). [ESRI File Geodatabase]. 1997-1999.
Canada & USA Basemaps	Natural Resources Canada. Atlas of Canada National Scale Data 1:1,000,000. [ESRI Geodatabase]. 2015.



Yukon

Northwest Territories

British Columbia Conservation Areas: Peace

Non-governmental Organization Conservation Areas

- Fee Simple
- Covenants and Other Registered Interests on Title
- Agreements and Other Unregistered Interests Not on Title*

Provincial Protected Areas

- Provincial Parks, Ecological Reserves, Recreation Areas, Protected Areas, and Conservancies
- Wildlife Management Areas
- Ministry of Water, Land, and Resource Stewardship Acquisition, Lease, and Transfer of Administration Lands

National Protected Areas

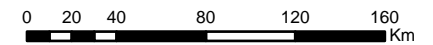
- National Parks
- National Wildlife Areas and other National Protected Areas

Local Government Protected Areas

- Local Government Park Natural Areas
- Highways

Points represent conservation areas that are less than 500 hectares; polygons represent those that are greater than or equal to 500 hectares. Some points may be obscured by overlying points.

*Accuracy of some conservation areas has not yet been quality assured by respective securement organizations.

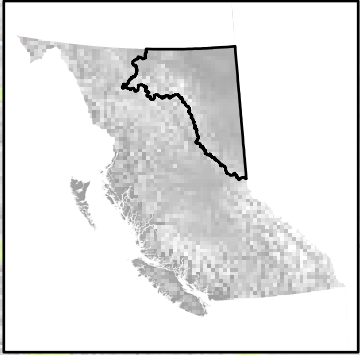


BC Albers

BC NGO Conservation Areas Database Technical Working Group:



Layer	Source
Non-governmental Organization Conservation Areas	British Columbia NGO Conservation Areas Database Technical Working Group. 2024. BC NGO Conservation Areas Database - Fee Simple, Registerable Interests, and Unregisterable Interests (secured as of Dec 31, 2023). [ESRI Personal Geodatabase]. Last updated Oct 24 2025.
Provincial Protected Areas - Provincial Parks, Ecological Reserves, Recreation Areas, and Protected Areas - Conservancies	BC Government GeoBC. TANTALIS - BC Parks, Ecological Reserves, and Protected Areas. [ESRI File Geodatabase]. Aug 2025. BC Government GeoBC. TANTALIS - Conservancy Areas. [ESRI File Geodatabase]. Aug 2025.
- Wildlife Management Areas - Acquisition, Lease, and Transfer of Administration Lands	BC Government GeoBC. Conservation Lands. [ESRI File Geodatabase]. Aug 2025.
National Protected Areas - National Parks - National Wildlife Areas and other National Protected Areas - National Marine Conservation Areas, Marine Protected Areas, and Fisheries Closure Areas	BC Government GeoBC. National Parks of Canada within British Columbia. [ESRI File Geodatabase]. Aug 2025. Environment and Climate Change Canada. Canadian Protected and Conserved Areas Database 2024. [ESRI File Geodatabase]. Accessed Aug 2025.
Local Government Park Natural Areas - Municipal - Regional District	The Nature Trust of British Columbia. 2017. Local Government Park Natural - Municipalities. Digital data files. Last updated 12 July 2019. Ducks Unlimited Canada. 2023. BC Significant Regional District Park Natural Areas. Digital GIS Data files. Last updated Oct 10 2023.
Lakes and Rivers	BC Annotation 1:2,000,000 (Digital Baseline Mapping). June 2006.
Multidirectional Hillshade Basemap	Elevation/World_Hillshade: Esri, USGS. [ESRI Map Service].
1:50,000 DEM Basemap	Natural Resources Canada. Canada digital elevation data (1:50,000). [ESRI File Geodatabase]. 1997-1999.
Canada & USA Basemaps	Natural Resources Canada. Atlas of Canada National Scale Data 1:1,000,000. [ESRI Geodatabase]. 2015.



Muncho Lake

Fort Nelson

Fort St. John

Taylor

Hudson's Hope

Chetwynd

Dawson Creek

Pouce Coupe

Tumbler Ridge



Conservation Area by NGO Securement Organization (as of December 31, 2024)

Securement Organization	Conservation Area Subtype			Total (ha)
	Fee Simple (Ha)	Registered Interests (Ha) <i>Conservation Covenants and Leases</i>	Unregistered Interests ¹ (Ha) <i>Conservation Agreements</i>	
American Friends of Canadian Conservation		5.8		5.8
BC Parks Foundation	5,404.1	103.4		5,507.5
BC Small Wetlands Association			0.9	0.9
Bowen Island Conservancy	78.1	1.7		79.8
British Columbia Waterfowl Society	8.1			8.1
Brown Property Preservation Society		18.8		18.8
Burrowing Owl Conservation Society of B.C.	2.5			2.5
Central Okanagan Land Trust	327.5	54.4		381.9
Comox Strathcona Natural History Society		5.9		5.9
Comox Valley Land Trust	24.5	553.2		577.7
Conservancy Hornby Island		34.3		34.3
Cowichan Community Land Trust	1.3	328.2		329.5
Cumberland Community Forest Society	17.8	126.5		144.4
Denman Conservancy Association	165.6	195.2		349.6
Ducks Unlimited Canada	11,217.0	1,278.1	90,185.3 ²	102,288.3
Ecoforestry Institute Society	32.7			32.7
Fraser Valley Conservancy	11.6	0.4		12.0
Friends of Maltby Lake Watershed Society	76.6			76.6
Gabriola Historical and Museum Society		0.2		0.2
Gabriola Land and Trails Trust		92.2		92.2
Galiano Conservancy Association	281.4	236.7		511.3
Gambier Island Conservancy		148.0		148.0
Garry Oak Meadow Preservation Society		8.7		8.7
Habitat Acquisition Trust	26.5	1,760.3		1,763.4
Haida Gwaii Tluu	62.8			62.8
Islands Trust Conservancy	707.0	672.1		1,354.8
Kootenay Land Trust Society		63.7		63.7
Lasqueti Island Nature Conservancy		135.0		135.0
Malaspina Land Conservancy Society		2.4		2.4
Mayne Island Conservancy Society		25.6		25.6
Morrell Sanctuary Society for Environmental Education		110.2		110.2
Nanaimo & Area Land Trust	24.5	504.9		529.4
Nature Conservancy of Canada	90,822.3	12,199.2		103,020.3
Nature Conservancy of the North Okanagan Society		31.8		31.8
Northwest Wildlife Preservation Society	104.0			104.0
Pender Islands Conservancy Association	42.7			42.7
Quadra Island Conservancy and Stewardship Society	22.2	124.7		146.9
Quamichan Watershed Stewardship Society		1.3		1.3
Raincoast Conservation Foundation	23.6			23.6
Rosewall-Bonnel Land Trust Society		0.9		0.9
Salt Spring Island Conservancy	310.8	317.5	26.6	654.9
Salt Spring Island Water Preservation Society	118.8	45.5		164.3
Savary Island Land Trust Society	19.7			19.7
South Okanagan Rehabilitation Centre for Owls	2.5			2.5
Southern Interior Land Trust Society	204.0			204.0
Sunshine Coast Conservation Association		156.6		156.6
Surge Narrows Community Association		8.2		8.2
The Galiano Club	345.4			345.4
The Land Conservancy of BC	1,112.4	5,191.6	1.7	6,277.1
The Nature Trust of British Columbia	25,760.2	1,628.1		27,355.2
The Valhalla Foundation for Ecology	108.4	18.7		127.2
Turtle Island Earth Stewards Society	0.4	382.9		383.3
Wild Bird Trust		0.3	20.8	21.2
WSÁNEC Lands Trust Society	18.5			18.5
Total Area	130,112.7	22,850.0	90,235.3	223,433.8³

As there can be more than one Conservation Area Subtype interest on a conservation area, summing the area values for all Conservation Area Subtypes would lead to an overvaluation in the total conserved area. The "Total Area" removes the overvaluation and reflects the true conserved area. ¹Unregistered Interests must be of at least 10 years duration to be included in the database. ²This area value contains some uncertainty. Due to limited information on the extent of parcel coverage for many Ducks Unlimited Canada (DUC) unregistered interests within the database, and in order to best represent the actual state of land conservation by unregistered interest within BC, this value is sourced directly from DUC. It is used to calculate the Total Area value for DUC securements and the Total Area value for Unregistered Interests in the table above, as well as the overall Total Area value for all BC conservation lands on page 5. ³Total Area may change as uncertainty is reduced DUC Unregistered Interests. This value is calculated using DUC unregistered interest spatial data within the database (74,185.5 Ha) rather than the area value source directly from DUC and is representative of total securements contained within the NGO Conservation Areas database. Data Recognition: British Columbia NGO Conservation Areas Technical Working Group. 2025. BC NGO Conservation Areas Database - Fee Simple, Registerable Interests, and Unregisterable Interests (secured as of December 31, 2024). Digital data files. Last updated October 24, 2025.

Local Government Park Natural Areas

Significant Regional District Park Natural Areas (as of August 30, 2023)¹

Regional District	Total (ha)
Alberni-Clayoquot Regional District	613.5
Capital Regional District	13,620.4
Central Coast Regional District	40.3
Columbia Shuswap Regional District	280.9
Comox Valley Regional District	1,622.5
Cowichan Valley Regional District	1,836.5
Fraser Valley Regional District	2,009.9
Kootenay Boundary Regional District	69.5
Metro Vancouver Regional District	13,846.9
Mount Waddington Regional District	73.9
Peace River Regional District	51.1
qathet Regional District	257.4
Regional District of Central Kootenay	316.7

Regional District	Total (ha)
Regional District of Central Okanagan	2,143.8
Regional District of East Kootenay	215.1
Regional District of Fraser-Fort George	247.1
Regional District of Nanaimo	2,860.8
Regional District of North Okanagan	411.4
Regional District of Okanagan Similkameen	151.3
Squamish Lillooet Regional District	27.1
Strathcona Regional District	651.9
Sunshine Coast Regional District	1,682.8
Thompson Nicola Regional District	249.4
Total Area	43,280.4

Municipal Park Natural Areas (as of March 31, 2017)²

Municipality	Total (ha)
Bowen Island Municipality	65.7
City of Abbotsford	338.7
City of Burnaby	1,644.4
City of Campbell River	74.9
City of Castlegar	26.9
City of Chilliwack	49.4
City of Coquitlam	800.3
City of Courtenay	133.5
City of Cranbrook	90.4
City of Dawson Creek	100.7
City of Duncan	14.5
City of Enderby	1.2
City of Fort St. John	93.5
City of Greenwood	11.6
City of Kamloops	1,360.9
City of Kelowna	682.3
City of Langford	32.5
City of Langley	83.5
City of Maple Ridge	484.1
City of Merritt	1.5
City of Nanaimo	742.9
City of New Westminster	27.8
City of North Vancouver	89.2
City of Parksville	46.1
City of Penticton	512.9
City of Pitt Meadows	40.4
City of Port Alberni	196.7
City of Port Coquitlam	150.0
City of Port Moody	314.2
City of Powell River	185.4
City of Prince George	1,533.0

Municipality	Total (ha)
City of Prince Rupert	3,923.1
City of Richmond	223.5
City of Salmon Arm	614.0
City of Surrey	1,785.5
City of Terrace	210.7
City of Vancouver	583.4
City of Vernon	105.0
City of Victoria	160.3
City of White Rock	14.6
Corporation of Delta	457.8
District of Barriere	4.2
District of Central Saanich	38.9
District of Clearwater	7.1
District of Coldstream	17.3
District of Colwood	62.7
District of Highlands	151.4
District of Hope	8.2
District of Invermere	48.8
District of Kent	2.2
District of Kitimat	2,171.6
District of Lake Country	456.7
District of Lantzville	4.0
District of Logan Lake	1.4
District of Metchosin	36.9
District of Mission	35.9
District of North Saanich	33.5
District of North Vancouver	8,647.8
District of Oak Bay	48.6
District of Peachland	68.9
District of Port Hardy	84.5
District of Saanich	552.3

Municipality	Total (ha)
District of Sechelt	166.6
District of Sooke	72.4
District of Sparwood	57.4
District of Squamish	204.2
District of Summerland	425.2
District of West Kelowna	218.4
District of West Vancouver	479.1
Municipality of North Cowichan	102.2
Municipality of Whistler	515.8
shísháhl Nation Government District	7.7
Town of Comox	82.3
Town of Gibsons	8.3
Town of Ladysmith	68.4
Town of Lake Cowichan	1.4
Town of Oliver	33.9
Town of Princeton	44.5
Town of Qualicum Beach	86.9
Town of Sidney	7.5
Town of View Royal	26.4
Township of Esquimalt	22.5
Township of Langley	284.0
Village of Ashcroft	1.0
Village of Cumberland	166.5
Village of Fruitvale	0.3
Village of Keremeos	19.5
Village of Midway	3.1
Total Area	33,592.7

Southern Gulf Islands Local Government Park Natural Areas are included as Capital Regional District parks within above summary tables. These parks are owned by the Capital Regional District and managed by local Gulf Island Parks and Recreation Commissions. Spatial data for these park areas was provided by the Islands Trust. Park boundaries are sourced from local government data and vary in accuracy. Area values may change as additional park spaces are added and existing spatial and attribute data are improved.

Data Recognition: 1) Ducks Unlimited Canada. 2023. British Columbia Significant Regional District Park Natural Areas. Digital GIS Data files. Last updated October 10, 2023.

2) The Nature Trust of British Columbia. 2017. Local Government Park Natural Areas - Municipalities. Digital GIS data files. Last updated June 12, 2019.